

# Chip Antenna

## Specification

<b>Type</b>	<b>2.4GHz</b>
<b>Part No</b>	ACA-5036-A2-CC-S ACA-3216-A1-CC-S ACA-2012-A1-CC-S ACA-8010-A1-MC-S ACA-5020-A2-MC-S ACA-3216-A2-MC-S

Product name	ACA-5036-A2-CC-S	ACA-3216-A1-CC-S
--------------	------------------	------------------

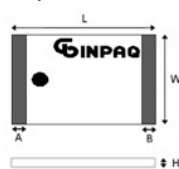
Appearance



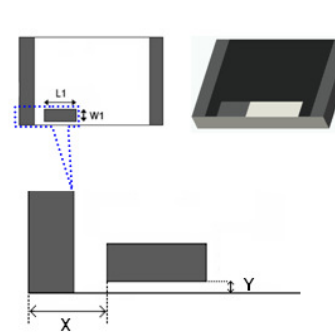
Specification

Center Frequency (MHz)	2450	2450
Frequency Band (MHz)	2400 ~ 2500	2400 ~ 2500
V.S.W.R.	< 2.5	< 2.5
Polarization	Linear	Linear
Impedance( $\Omega$ )	50 typ.	50 typ.
Peak Gain (dBi)	3.0	0.9
Efficiency (%)	80	71
Dimension (mm)	a. 5.2 x 3.7 x 0.7	b. 3.2 x 1.7 x 0.7

Top view



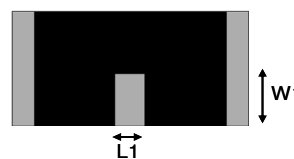
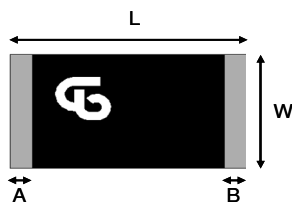
Bottom view



a

Chip Antenna	L	W	A	B	L1	W1	H	X	Y
ACA5036	5.2±0.3	3.7±0.3	0.45±0.25	0.45±0.25	1.1±0.20	0.55±0.20	0.70±0.15	0.85±0.25	0.12±0.06

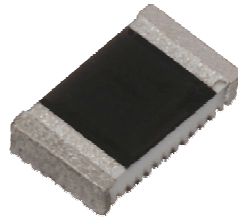
b



Chip Antenna	L	W	A	B	L1	W1	H
ACM0-3216	3.2±0.30	1.7±0.20	0.3±0.15	0.3±0.15	0.47±0.20	0.7±0.20	0.5±0.1

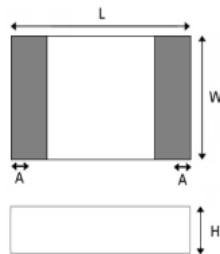
Product name	ACA-2012-A1-CC-S	ACA-8010-A1-MC-S
--------------	------------------	------------------

Appearance



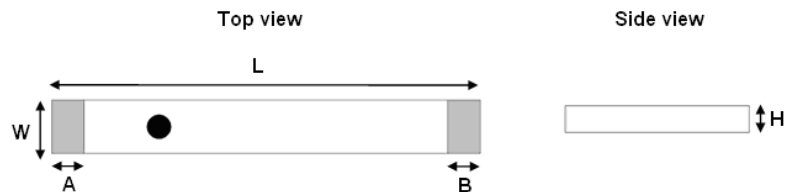
Specification		
Center Frequency (MHz)	2442	2450
Frequency Band (MHz)	2400 ~ 2483	2400 ~ 2500
V.S.W.R.	< 3.0	< 2.0
Polarization	Linear	Linear
Impedance( $\Omega$ )	50	50
Peak Gain (dBi)	1.7	1.9
Efficiency (%)	72	48
Dimension (mm)	c. 2.0 x 1.2 x 0.55	d. 8.0 x 1.0 x 1.0

c



Chip Antenna	L	W	H	A
ACA2012	2.0±0.3	1.2±0.3	0.55±0.2	0.4±0.25

d



L	8.00 ± 0.20
W	1.00 ± 0.20
H	1.00 ± 0.15
A	0.60 ± 0.20
B	0.60 ± 0.20

Product name	ACA-5020-A2-MC-S	ACA-3216-A1-CC-S
--------------	------------------	------------------

Appearance



**Specification**

Center Frequency (MHz)	2450	2450
Frequency Band (MHz)	2400~2500	2400 ~ 2500
V.S.W.R.	≤ 2.0	< 2.5
Polarization	Linear	Linear
Impedance(Ω)	50	50
Peak Gain (dBi)	0	0.9
Efficiency (%)		71
Dimension (mm)	e. 5.0x2.0x0.72mm	f. 3.2 x 1.7 x 0.7

