

## TCF 03025 H 900 02 A Engineering Specification

### 1.Scope

TCF 03025 H Series is a thin film common mode filter designed to suppress common mode noise for high speed differential data lines, such as USB 2.0, IEEE 1394, LVDS, DVI, HDMI, and MIPI.

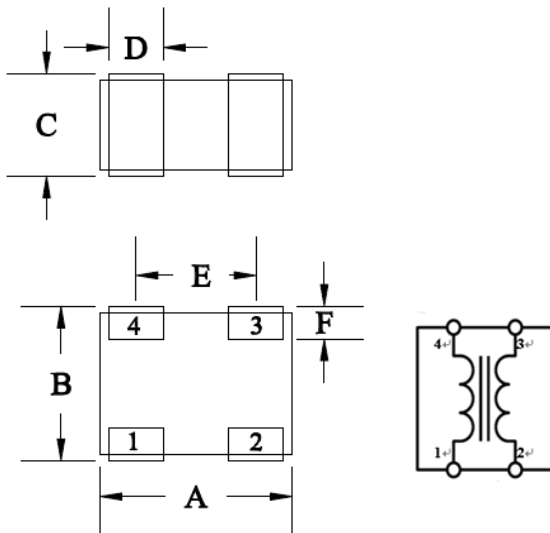
These differential interfaces can be used in personal computers, note books, mobile phone, LCD/PDP/DLP TVs, Blu-ray/DVD players, personal handheld equipments, etc.

### 2.Explanation of Part Number

**TCF**   **03025**   **H**   **900**   **02**   **A**  
 (1)   (2)   (3)   (4)   (5)   (6)

1. Product Type : TCF= Thin Film Common Mode Filter
2. EIA Dicide Code
3. Speed Identification Code: H= High Speed
4. Impedance(at 100MHz): 900= 90Ω
5. Line Code: 02= 2 lines
6. Specialized Specification Code

### 3.Circuit Diagram & Dimension



Unit: mm

Series	A	B	C	D	E	F
TCF 03025	0.88 <sup>+0.05</sup> <sub>-0</sub>	0.65±0.05	0.47±0.05	0.25±0.15	0.5±0.1	0.15±0.1

## 4. Specifications

### 4.1. ABSOLUTE MAXIMUM RATINGS

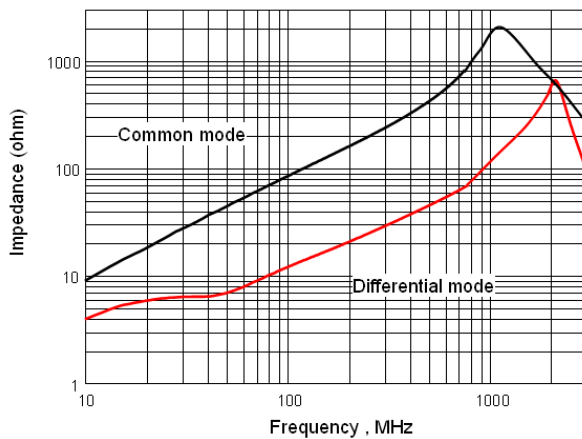
PARAMETER	PARAMETER	RATING	UNITS
Rated Voltage	$V_{DC}$	5	V
Rated Current	$I_{DC}$	100	mA
Operating Temperature		-25 ~ 85	°C
Lead Soldering Temperature	$T_{SOL}$	260 (10 sec.)	°C

### 4.2. ELECTRICAL CHARACTERISTICS

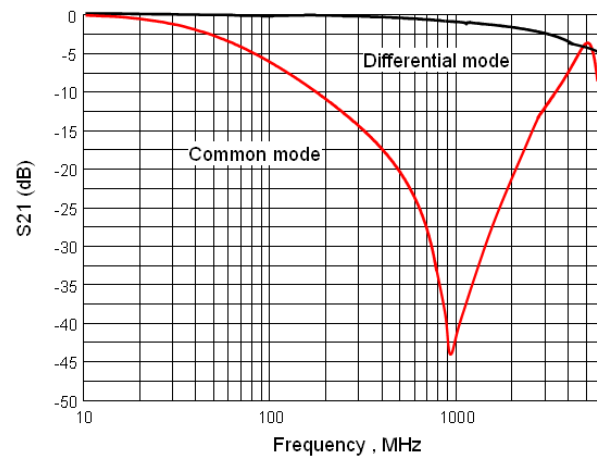
PARAMETER	MIN	TYP	MAX	UNITS
Common Mode Impedance (at 100 MHz)	65	90	112	$\Omega$
Cut-off Frequency		4		GHz
DC Resistance		4		$\Omega$
Insulation Resistance	10			M $\Omega$

### 4.3. TYPICAL CHARACTERISTICS

Impedance vs Frequency Characteristics\*



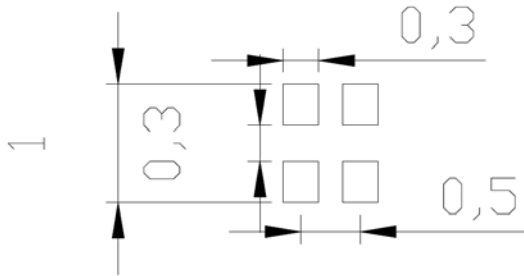
Insertion Loss vs Frequency Characteristics\*\*



\*Test Instrument: HP4291A Impedance/Material Analyzer

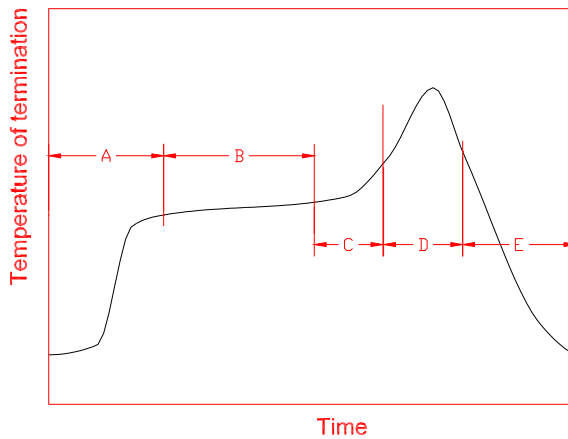
\*\*Test Instrument: Agilent E5071C ENA-L Network Analyzer

## 5. LAND LAYOUT



Dimensions in mm

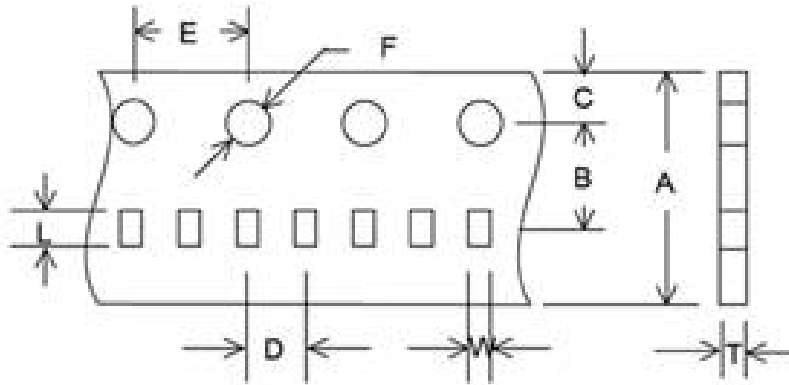
## 6. Recommendable reflow soldering



A	1 <sup>st</sup> rising temperature	The normal to Preheating temperature	30s to 60s
B	Preheating	140°C to 160°C	60s to 120s
C	2 <sup>nd</sup> rising temperature	Preheating to 200°C	20s to 40s
D	Main heating	if 220°C if 230°C if 240°C if 250°C if 260°C	50s~60s 40s~50s 30s~40s 20s~40s 20s~40s
E	Regular cooling	200°C to 100°C	1°C/s ~ 4°C/s

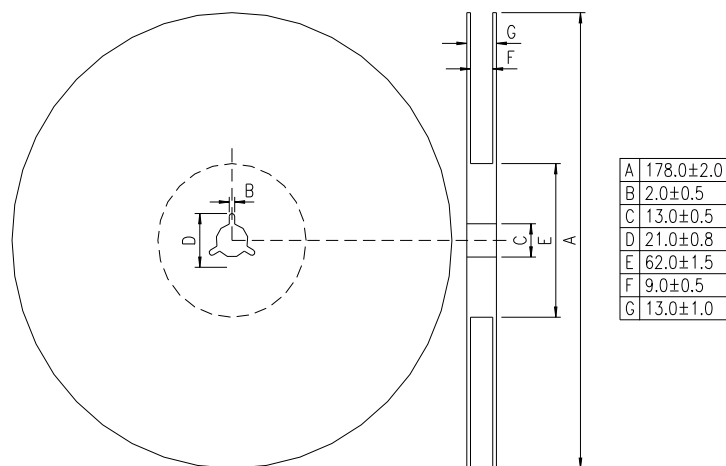
- According to J-STD-020C

### 7. Tape and reel specifications



A	8±0.1
B	3.5±0.05
C	1.75±0.05
D	2±0.05
E	4±0.1
F	1.55±0.05
L	1.04±0.03
W	0.78±0.03
T	0.60±0.03

Unit: mm



\*Standard quantity : 10000 pcs/Reel